



Metal Findings for CRYSTALLIZED™ -Swarovski Elements Pronged, Raw Brass Settings for most CRYSTALLIZED™ standard and fancy stones.



Closed Back

For foiled back stones.



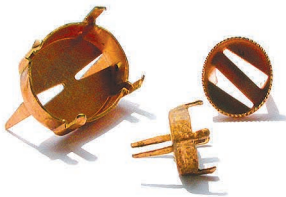
Open Back

For unfoiled or foiled back stones.



Sew On

For sewing fancy shaped or flat back stones onto fabrics or garments.



Nail Heads

For attaching flat backs stones to fabric or leather.



Initial Settings

For Art. # 4889 with or without a top loop.



Button Back with Shank

For Art. #1122, 12mm.