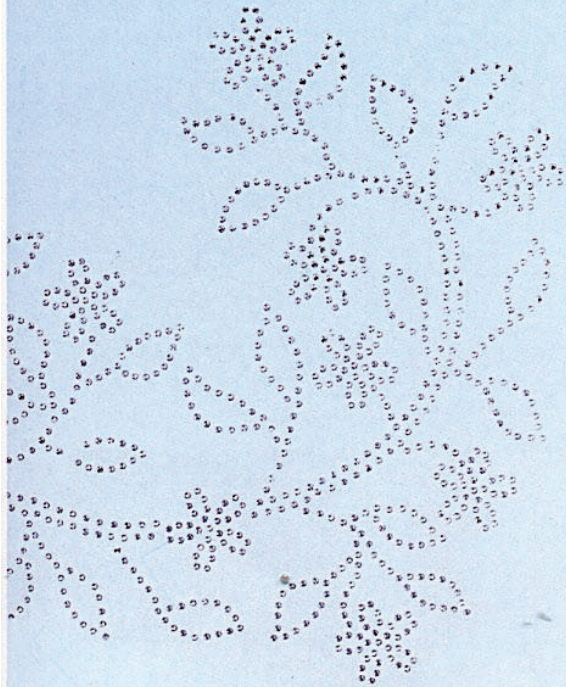


CREATE

your **STYLE**

www.create-your-style.com



HOW TO APPLY Crystal-it

Press the crystals firmly onto the film, so that all the crystals adhere to it.



Carefully separate the two layers of film. If some of the crystals remain on the white film, repeat step 1.



Put the crystal motif with the transparent film in the required position.



Press the crystals firmly onto the surface.



Immediately afterwards pull off the transparent film slowly and at a shallow angle.

After removing the transparent film, press the crystals firmly onto the surface again.

IMPORTANT NOTES:

Not suitable for applying to the skin! In some countries there are legal restrictions on the use in packaging of crystal containing lead oxide. This concerns in particular the total lead content, which is based on the ratio between the crystal mass and the weight of the remaining packaging. The customer takes full responsibility for adhering to these country-specific regulations and for passing the information on to its purchasers.

Crystal Wall Flowers by Tord Boontje

COLORS & EFFECTS

 Crystal 001	 Sun 248	 Fuchsia 502	 Crystal Aurore Boreale 001 AB
 Aquamarine 202	 Light Siam 227	 Amethyst 204	 Crystal Dolorado 001 DOR
 Sapphire 206	 Light Peach 362	 Jet 280	
 Peridot 214	 Topaz 203		
 Emerald 205	 Light Rose 223		

ELEMENTS IN:

S6T 
S10T 